

ITEM NO.	Assembly Desc	Project Number	QTY	FINISH
1	DROP DOOR	0112-007	2	WH13
2	.75" FUEL FILLER BARB	040-15223	2	N/A
3	1.5" FUEL FILLER BARB	040-15224	2	N/A
4	DS REAR BOX MOUNT	285-00189	1	
5	PS REAR BOX MOUNT	285-00189	1	
6	STEEL ROPE HOOK	525-00010	4	WH13
7	HITCH	9055-08-047	1	BK62
8	SS MUD FLAP	550-18-003	1	
9	UNDERBODY BOX MOUNT	550-19-001	2	WH13
10	CAMERA MOUNT	590-15-002	1	WH13
11	DROP DOOR BOX	9001-1030	1	WH13
12	DROP DOOR BOX	9001-733	4	WH13
13	DROP DOOR BOX	9001-983	3	WH13
14	LH SO BOX	9003-564	1	WH13
15	51 GAL TRANSFER TANK	9023-201	2	
16	BASKET	9027-096	1	WH13
17	BASKET	9027-097	1	WH13
18	FB DECK	9055-01-188	1	WH13
19	HEADBOARD	9055-02-093	1	WH13
20	TAILBOARD	9055-03-036	1	WH13
21	SILL KIT	9055-07-018	1	WH13
22	HATCH	9055-16-007	1	
23	BOX MOUNT BRACKET	9055-19-001	2	WH13
24	REAR BOX BRACKET	9061-695	2	

**NOTE: EXHAUST MODIFICATION
REQUIRED FOR REAR BOX
INSTALLATION**

TRUCK SPECIFICATIONS

2020 FORD SUPERDUTY
CHASSIS CAB

CA=84"

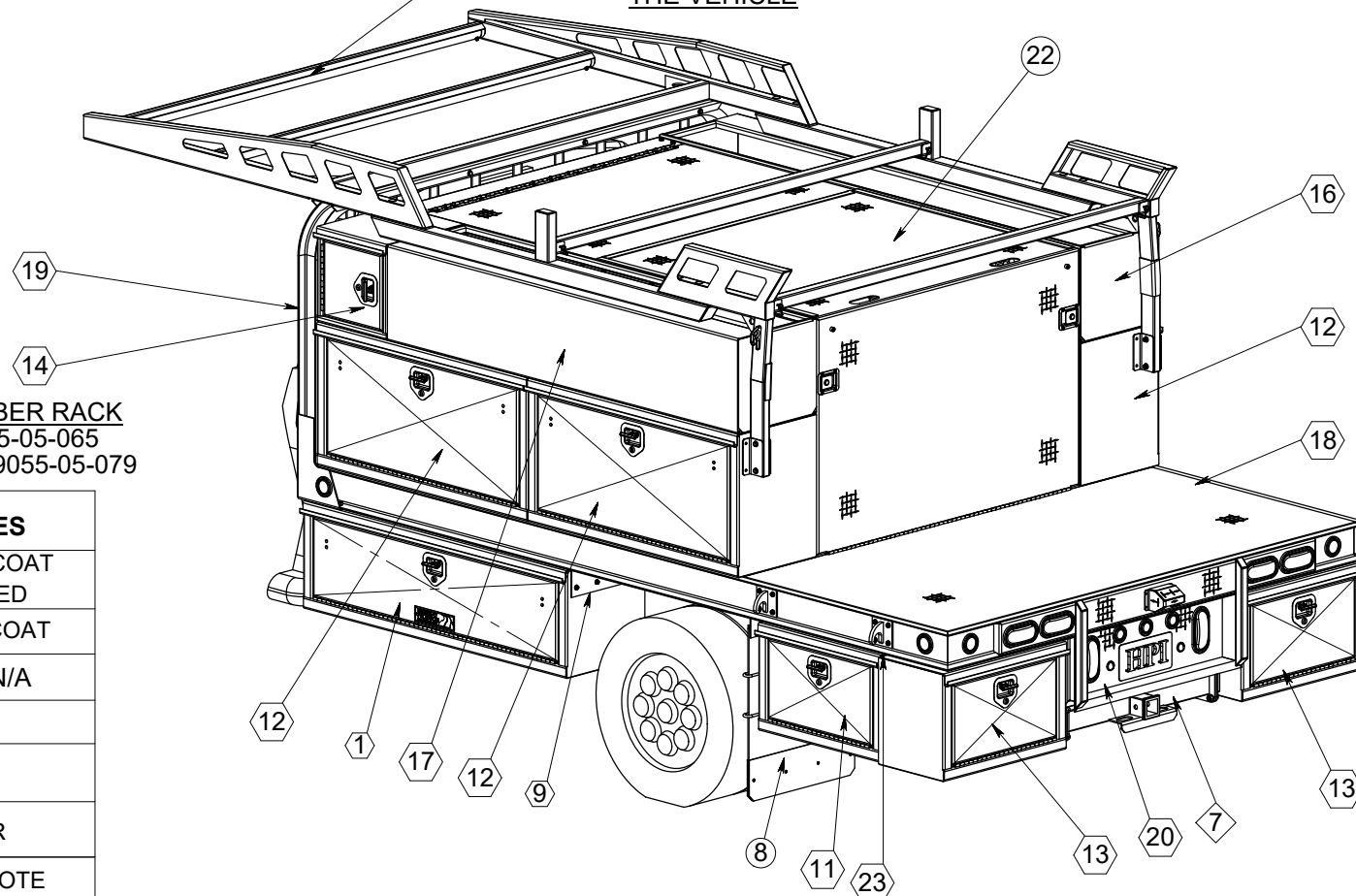
FRAME AFT OF AXLE=47.5

FRAME WIDTH=34"

TIRE SIZE=32" ± 2"

WARNING:

HEAD INJURY CAN OCCUR
WITH WIDER LUMBER RACK
WHEN ENTERING OR EXITING
THE VEHICLE



OPTIONAL LUMBER RACK
CREW CAB: 9055-05-065
REGULAR CAB: 9055-05-079

FINISH NOTES

POWDER COAT
& SHAVED

POWDER COAT

RAW or N/A

LINE-X

PAINT

PRIMER

** SPECIAL NOTE

MATERIAL:

ALUMINUM

PROJECT #:

3644

FINISH:

DP & SMOOTH

DRAWN BY:

REVISION:

AB

APVL BY:

JMG

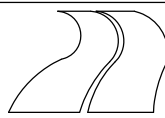
ENG DATE:

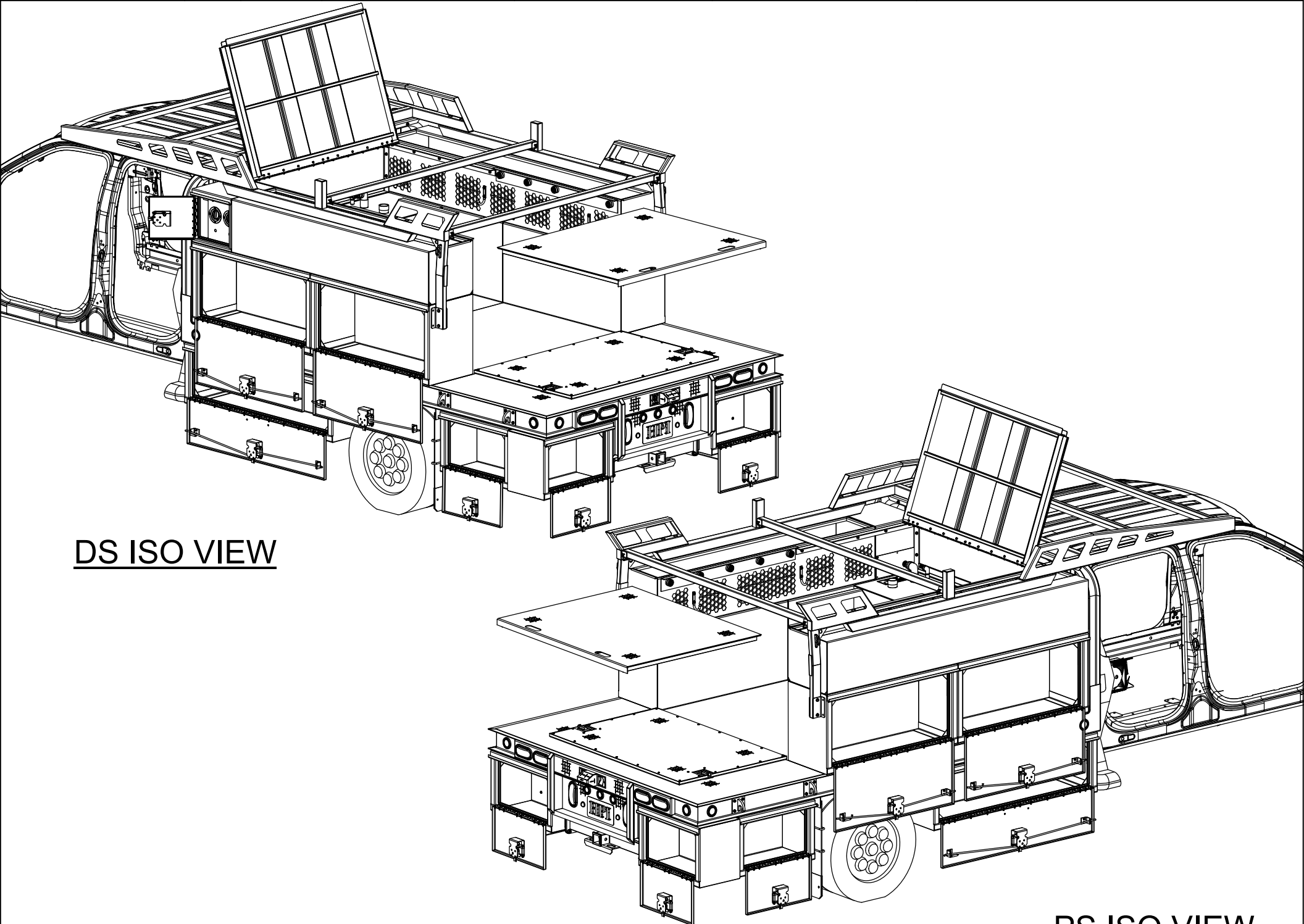
06/07/2018

Ov1

8'-0" x 12'-0" FLATBED

HIGHWAY
PRODUCTS
1-800-TOOL BOX
FAX 1-800-465-9545
800TOOLBOX.COM

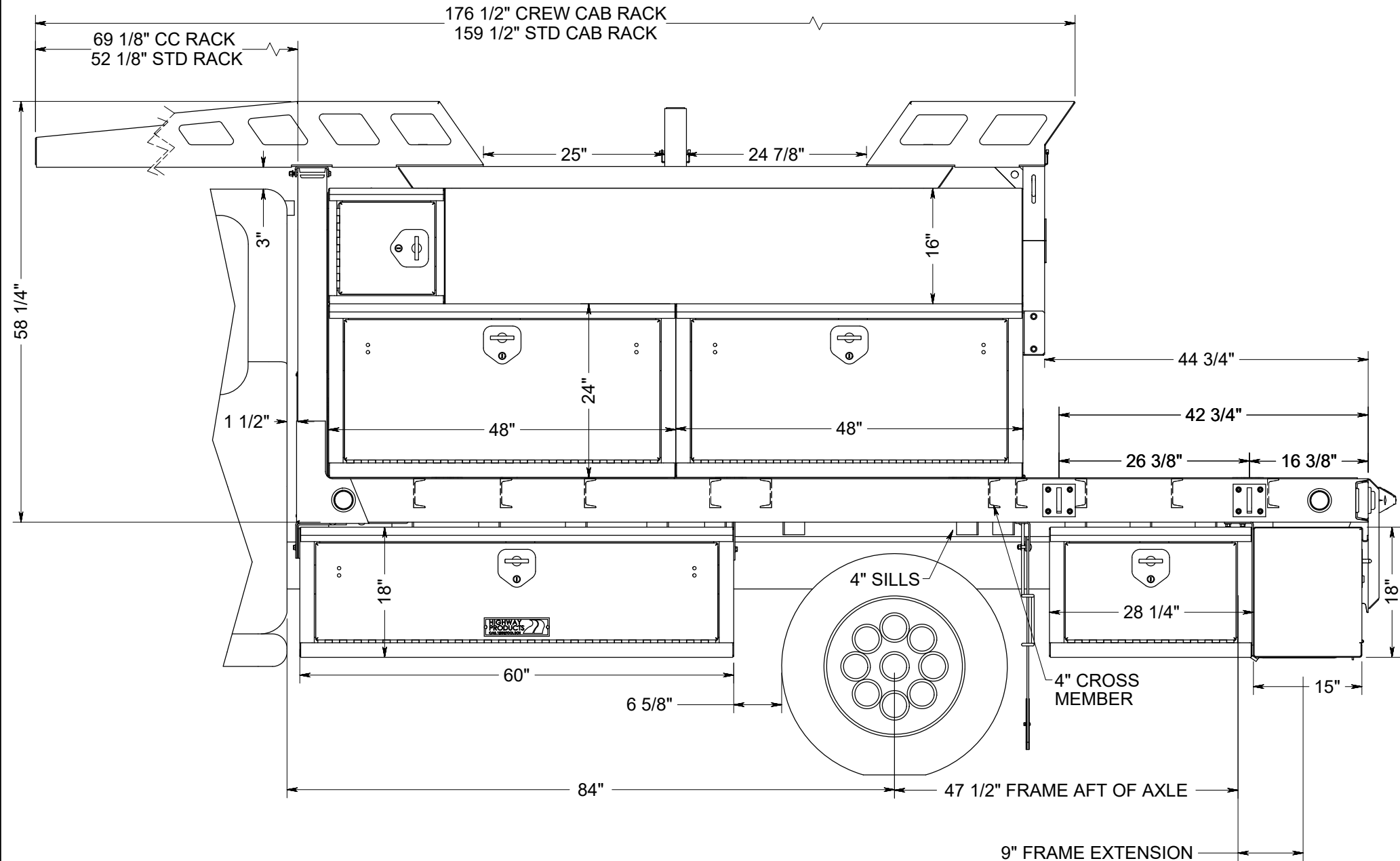




DS ISO VIEW

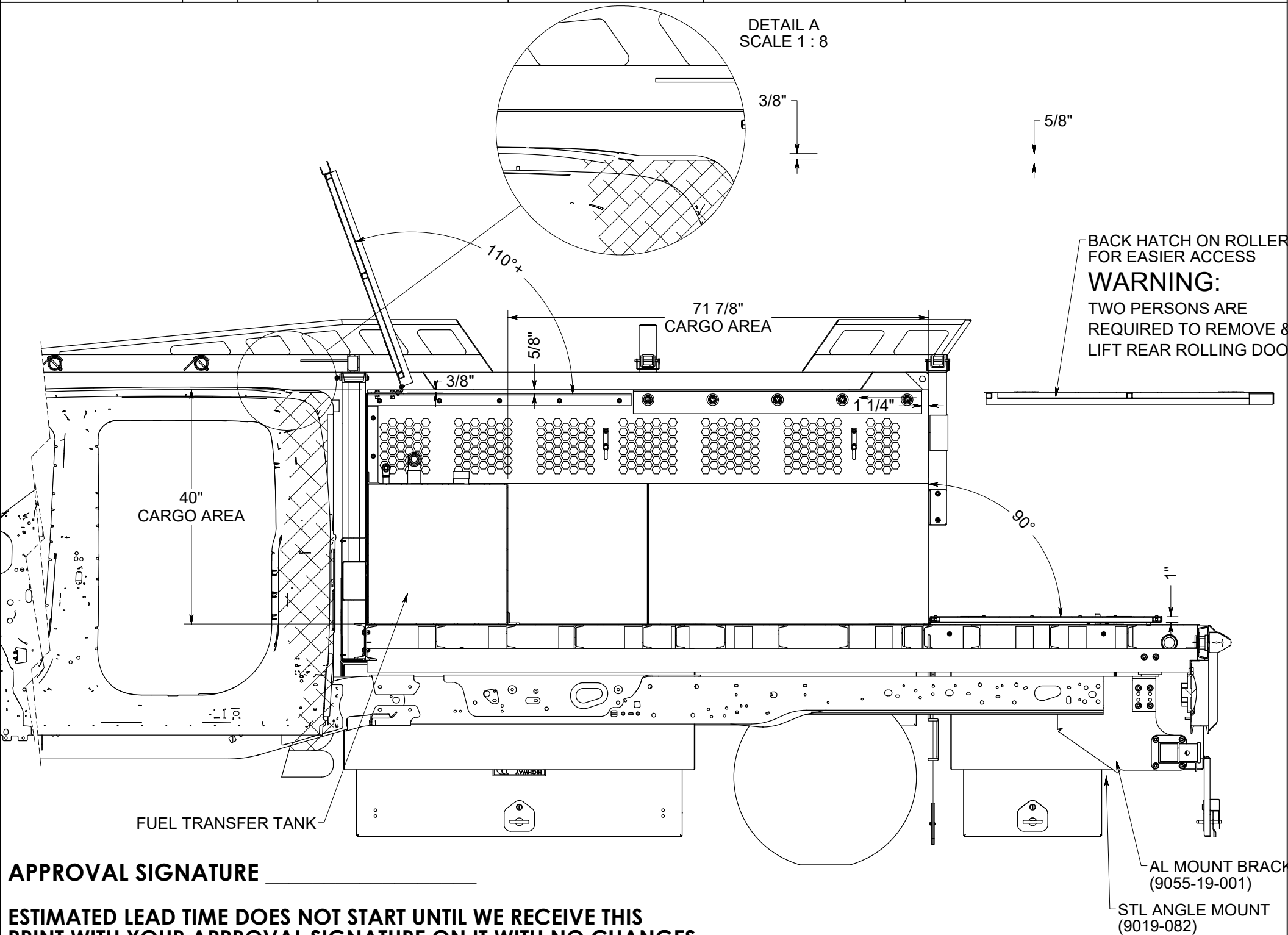
PS ISO VIEW

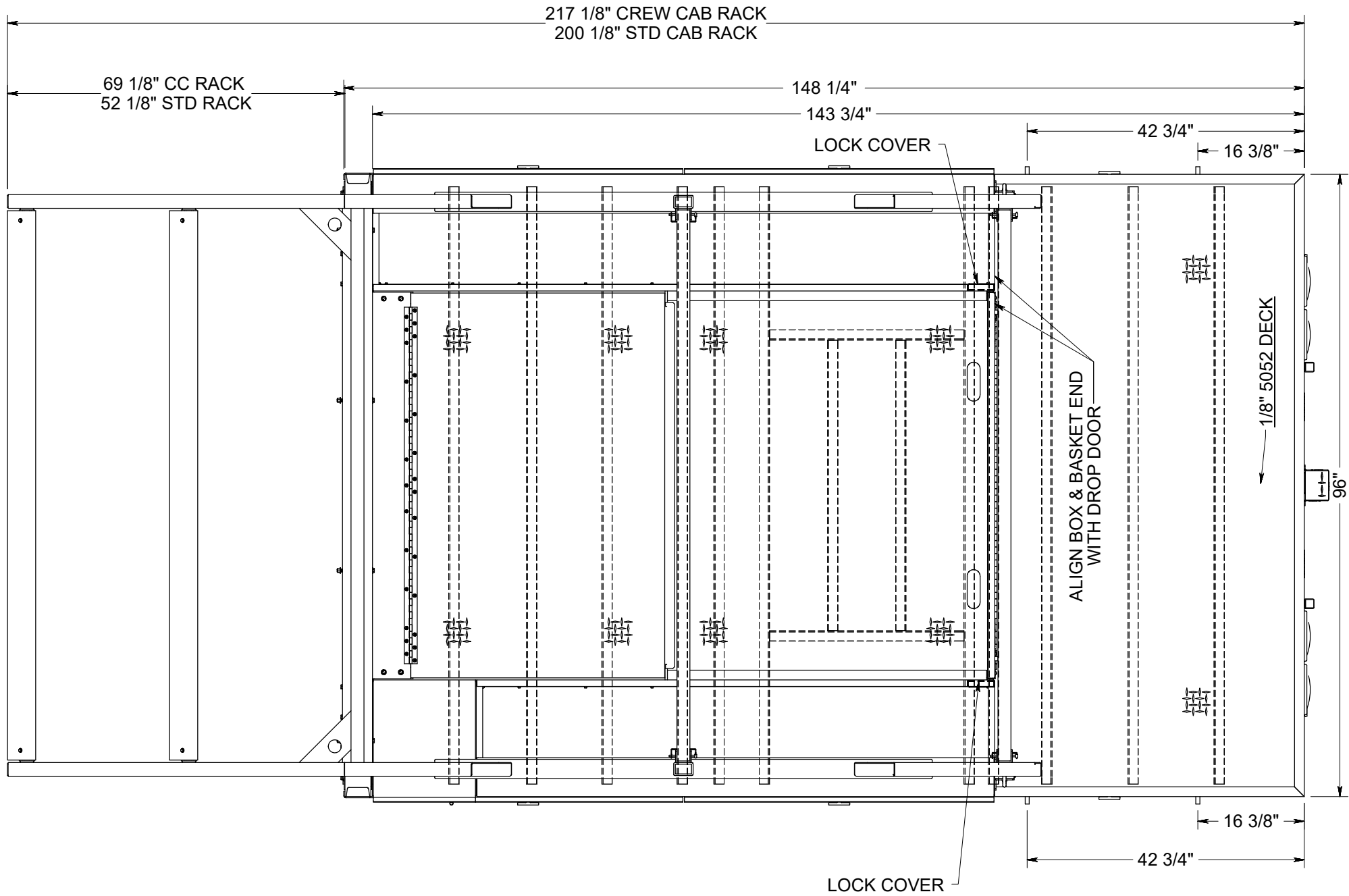
APPROVAL SIGNATURE _____



SIDE VIEW

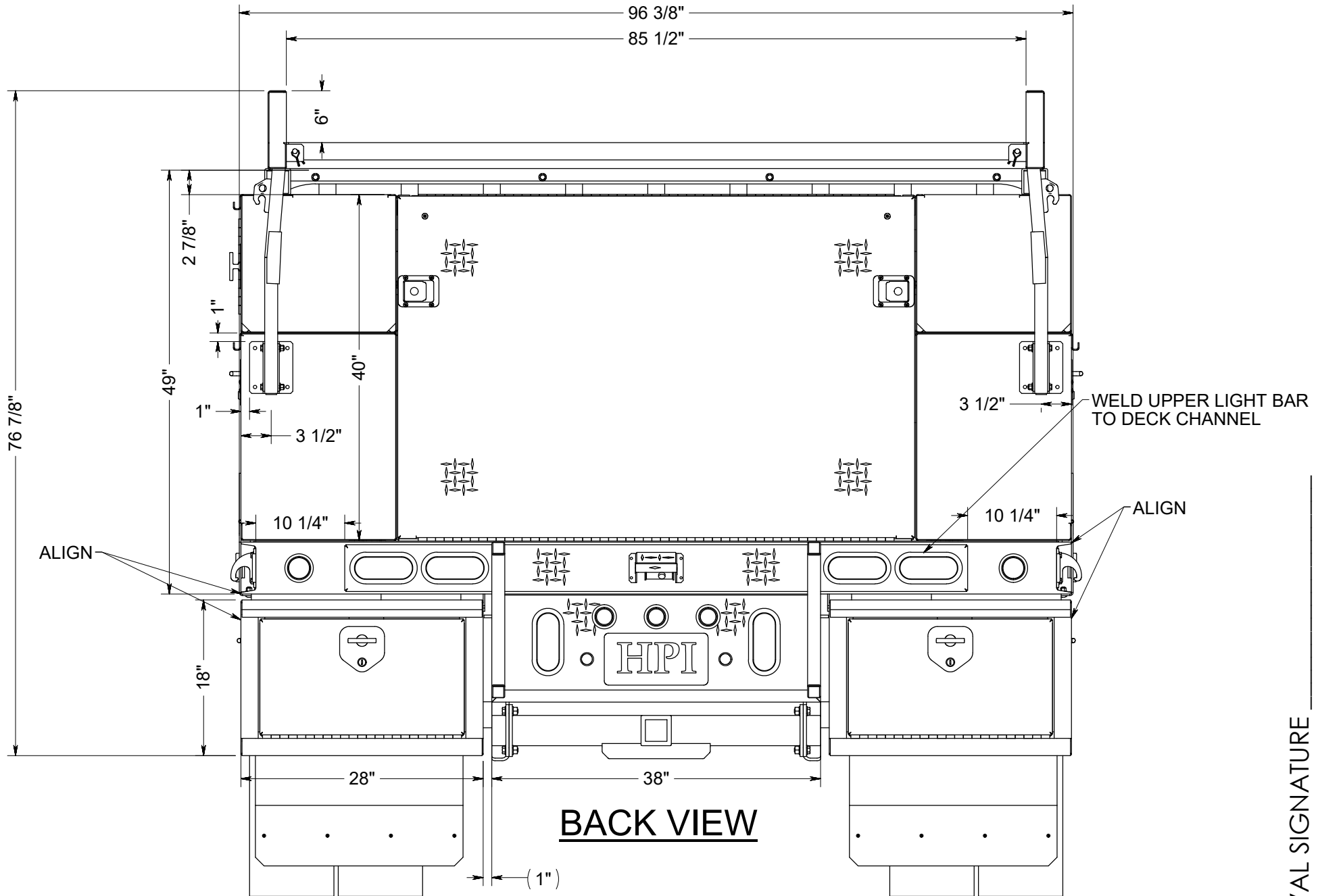
APPROVAL SIGNATURE _____





TOP VIEW

APPROVAL SIGNATURE _____



BACK VIEW

APPROVAL SIGNATURE _____