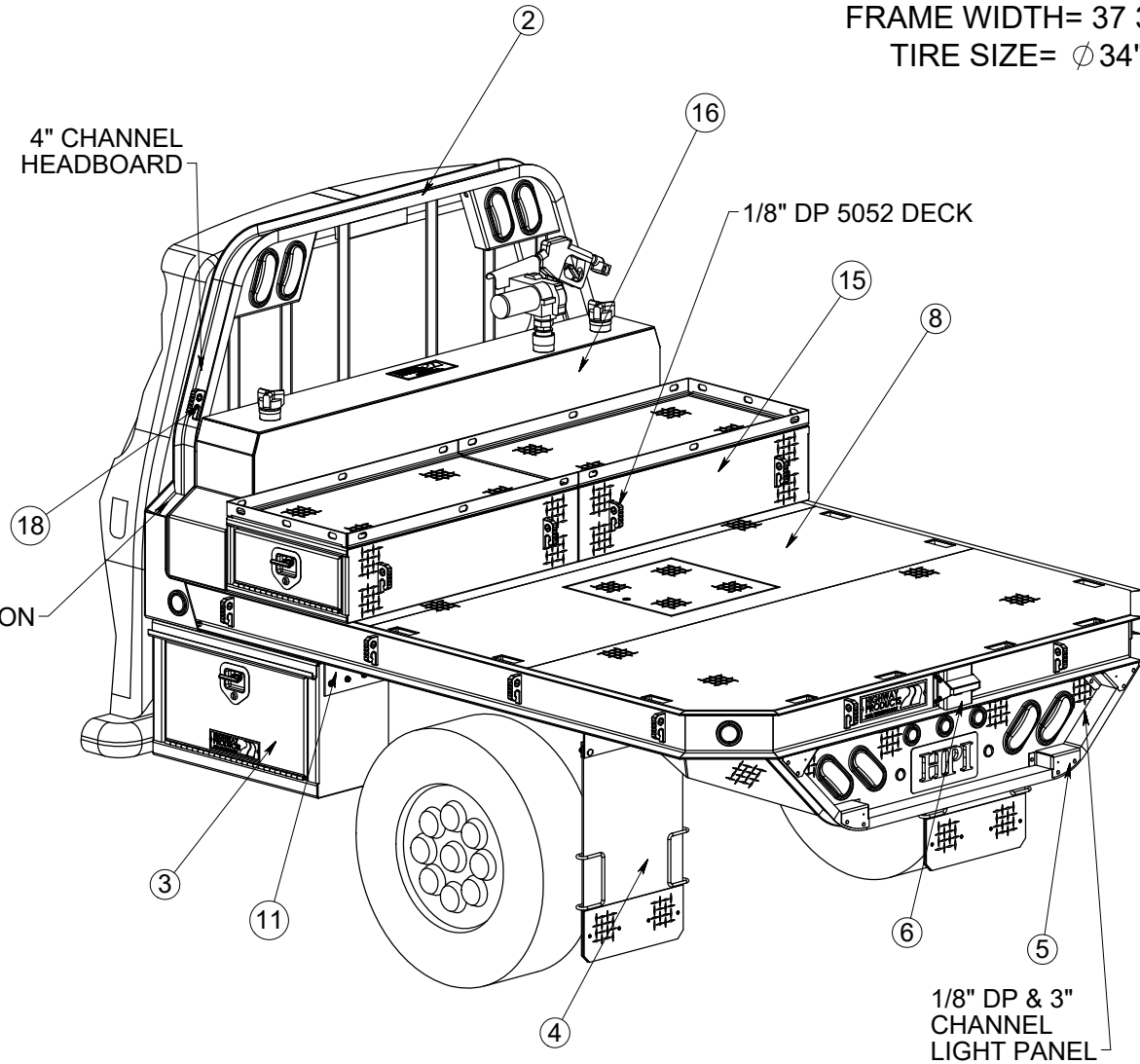


ITEM NO.	Assembly Desc	Project Number	FINISH
1	TAILBOARD	550-00033	1
2	FB STEPPED HEADBOARD W/ LIGHTS	550-02-066	1
3	DROP DOOR BOX	0112-013	2
4	SRW MUDFLAPS	550-18-002	1
5	REAR SENSOR KIT	550-15-002	1
6	CAMERA MOUNT	550-15-001	1
7	7' TRM CRNR LIGHT KIT	550-00078	1
8	TRIM CORNER DECK	550-01-005	1
9	WIRING INSTALL KIT	550-22-001	1
10	SILL KIT	550-07-014	1
11	BOX MOUNT	550-19-004	2
12	18x18 WELL COVER	550-00039	1
13	7-PIN PLUG	020-00026	1
14	DS DROP DOOR BOX	9001-1253	1
15	PS DROP DOOR BOX	9001-1254	1
16	TRANSFER TANK	9023-282	1
17	DRAWER SLIDE	9045-329	2
18	BOWEYE, MACHINED	040-15019	2
19	HITCH PLATE ASSEMBLY	550-08-002	1

TRUCK SPECIFICATIONS
 2020 FORD F-350 LONGBED
 BOX DELETE
 CA= 56 1/2"
 FRAME AFT OF AXLE= 40 3/8"
 FRAME WIDTH= 37 3/4"
 TIRE SIZE= ϕ 34"



FUEL FILL LOCATION

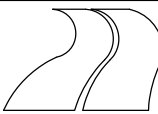
FINISH NOTES

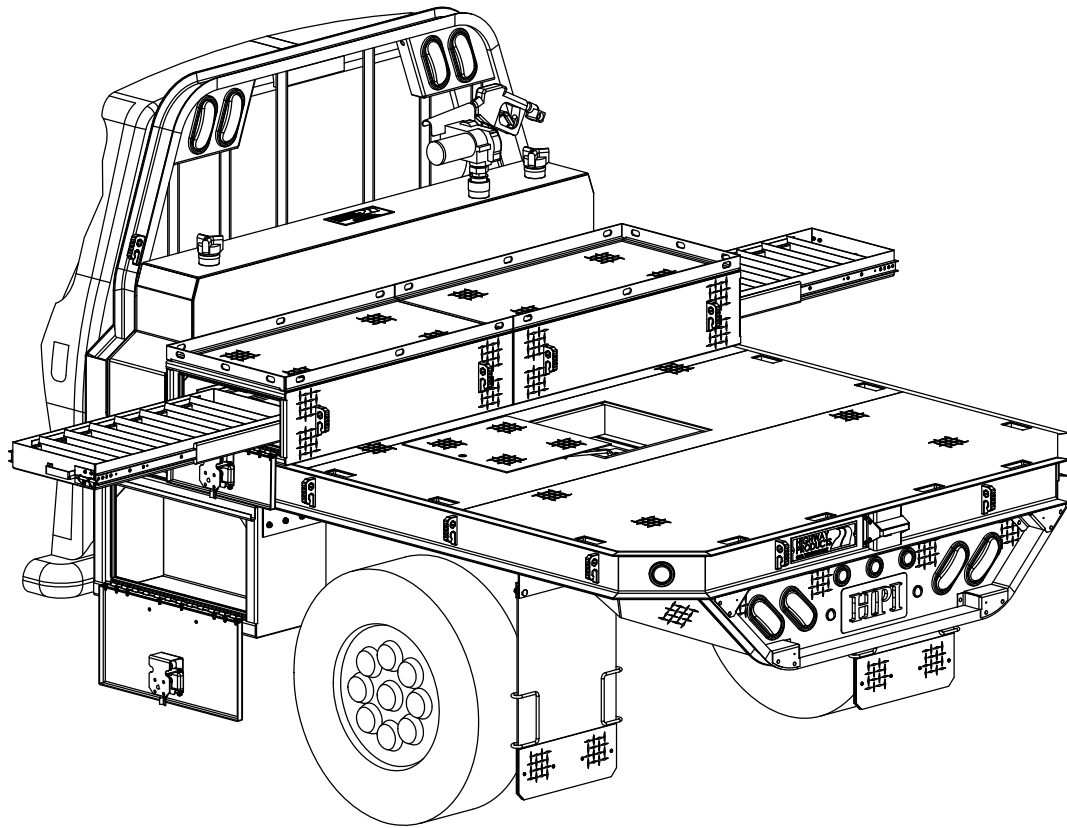
#	POWDER COAT & SHAVED
#	POWDER COAT
#	RAW or N/A
#	LINE-X
#	PAINT
#	PRIMER
**	SPECIAL NOTE

MATERIAL:		ALUMINUM		PROJECT #:	3530
FINISH:		DP & SMOOTH		DRAWN BY:	
REVISION:	APVL BY:	ENG DATE:			
AA	DAL	02/24/2021			
Ov1					

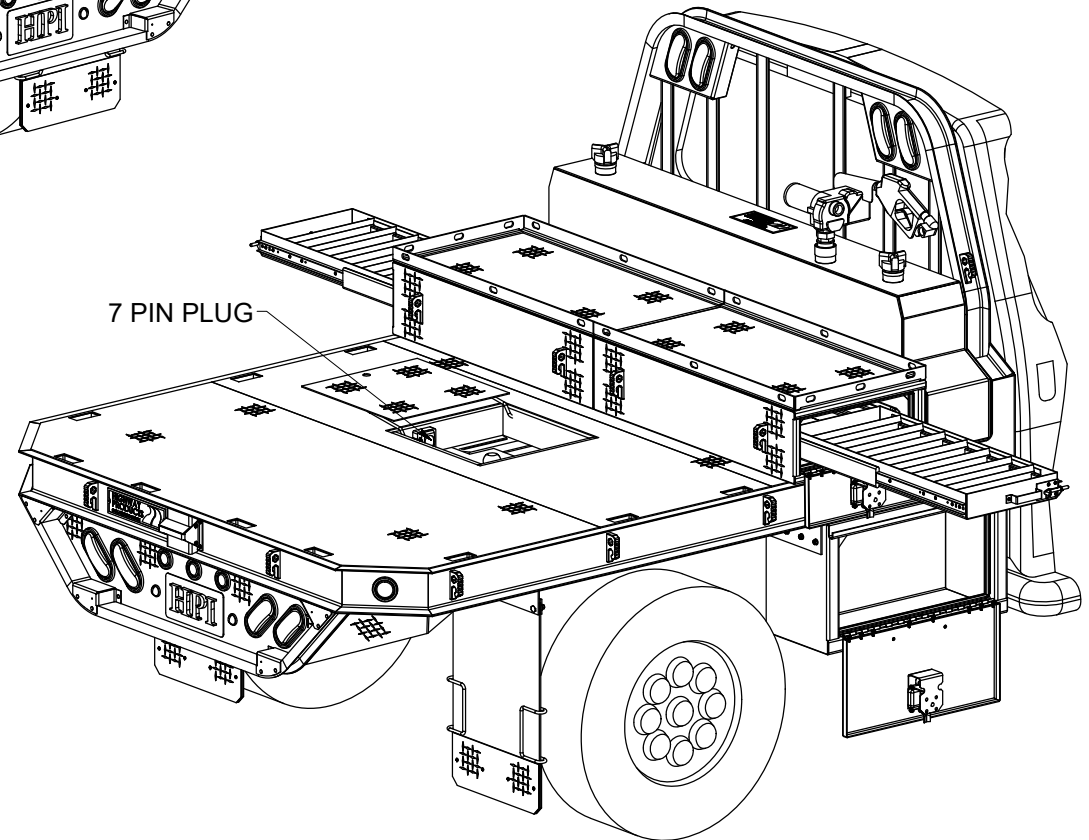
7'-0" x 8'-6" FLATBED

HIGHWAY PRODUCTS
 1-800-TOOL BOX
 FAX 1-800-465-9545
 800TOOLBOX.COM





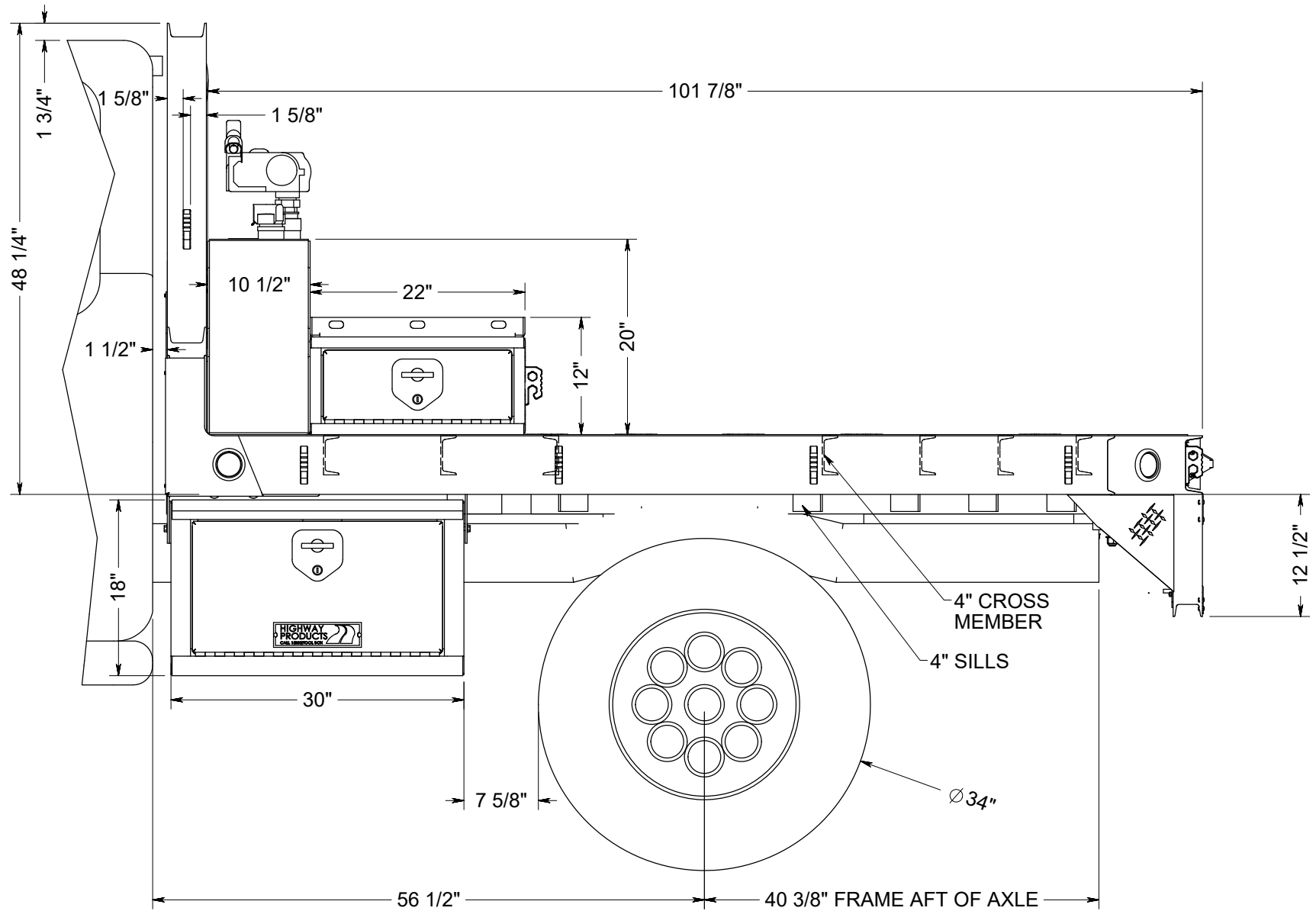
DS ISO VIEW



7 PIN PLUG

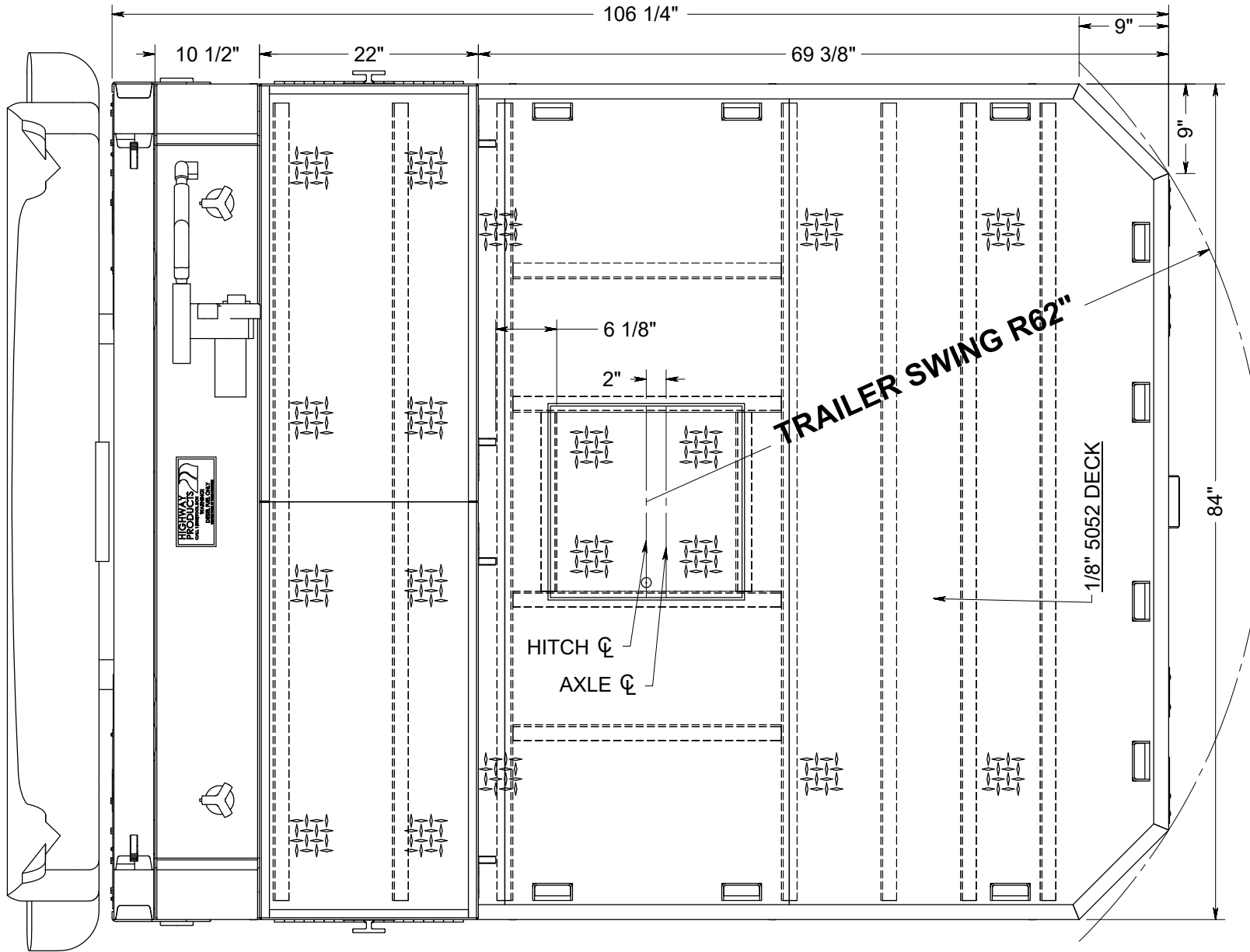
PS ISO VIEW

APPROVAL SIGNATURE _____



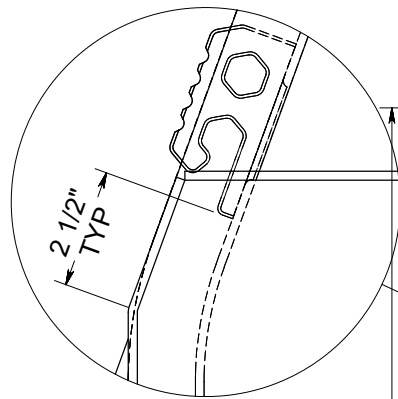
APPROVAL SIGNATURE _____

SIDE VIEW

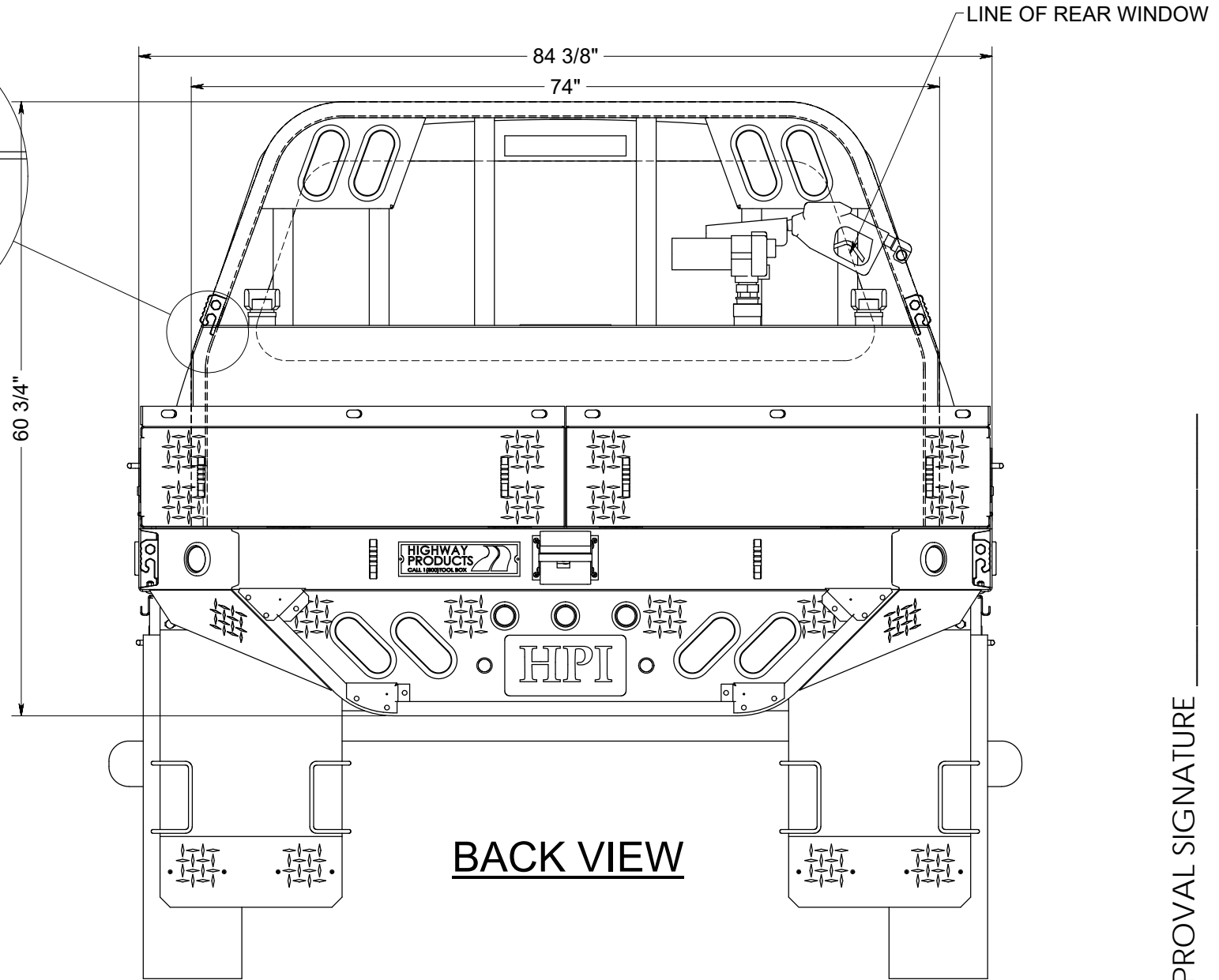


TOP VIEW

APPROVAL SIGNATURE _____

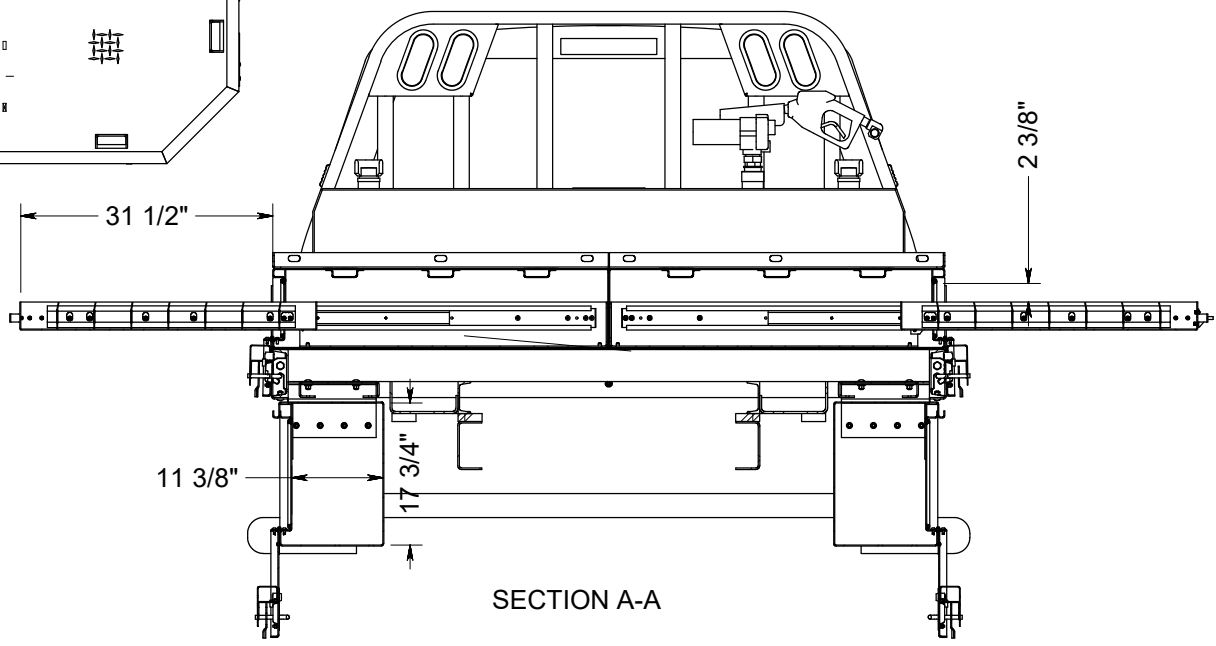
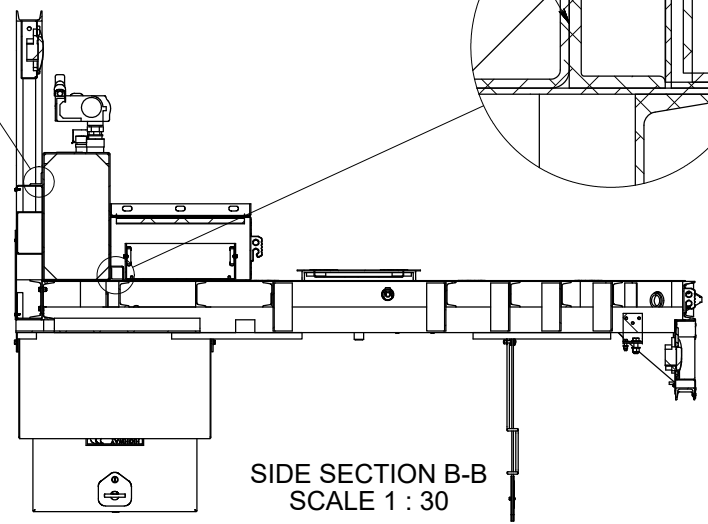
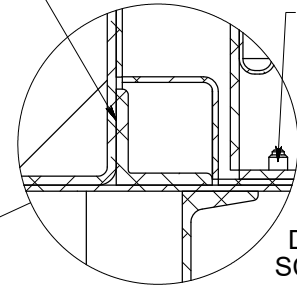
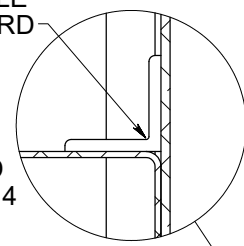
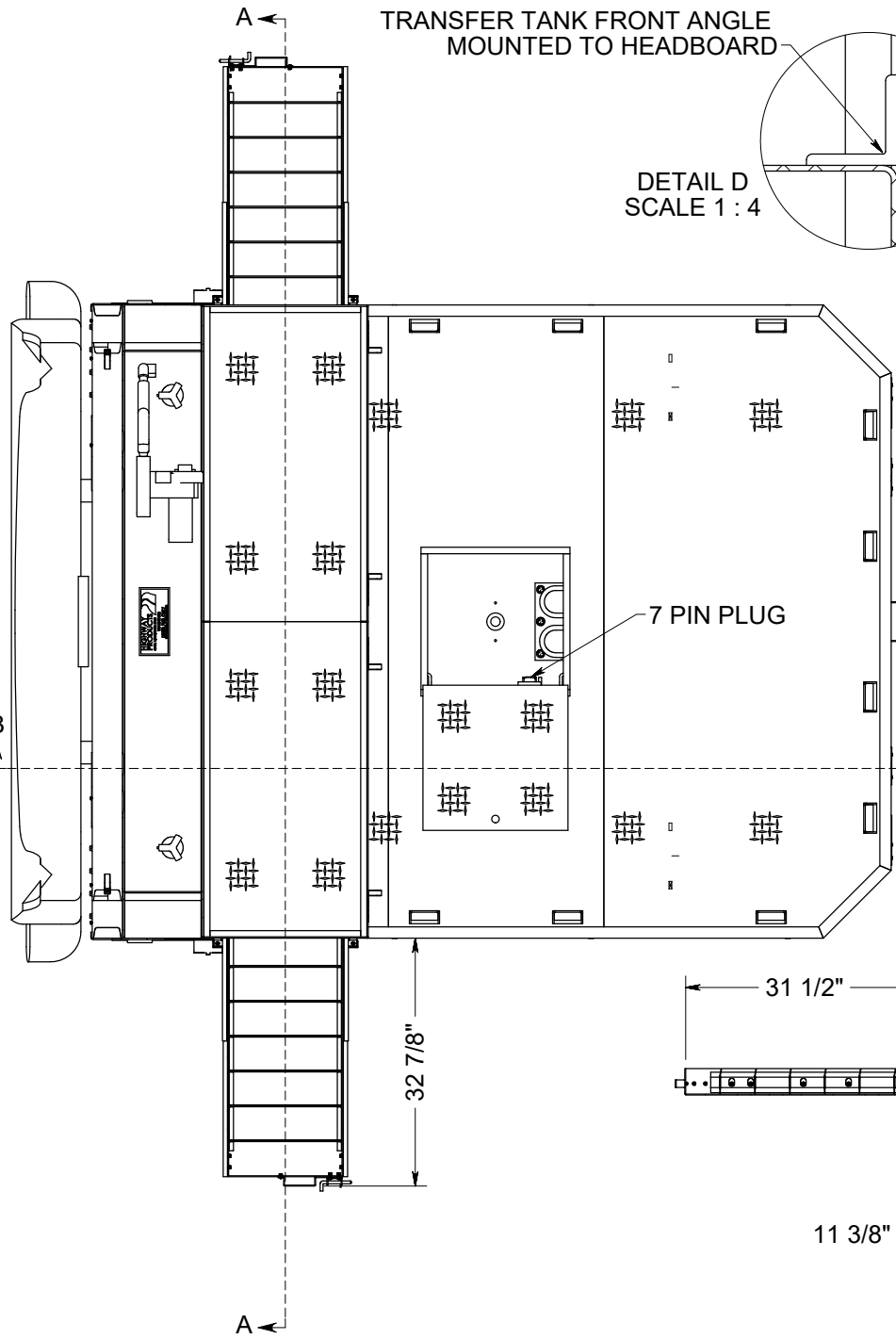


DETAIL E
SCALE 1 : 4



BACK VIEW

APPROVAL SIGNATURE _____



APPROVAL SIGNATURE _____

ESTIMATED LEAD TIME DOES NOT START UNTIL WE RECEIVE THIS PRINT WITH YOUR APPROVAL SIGNATURE ON IT WITH NO CHANGES